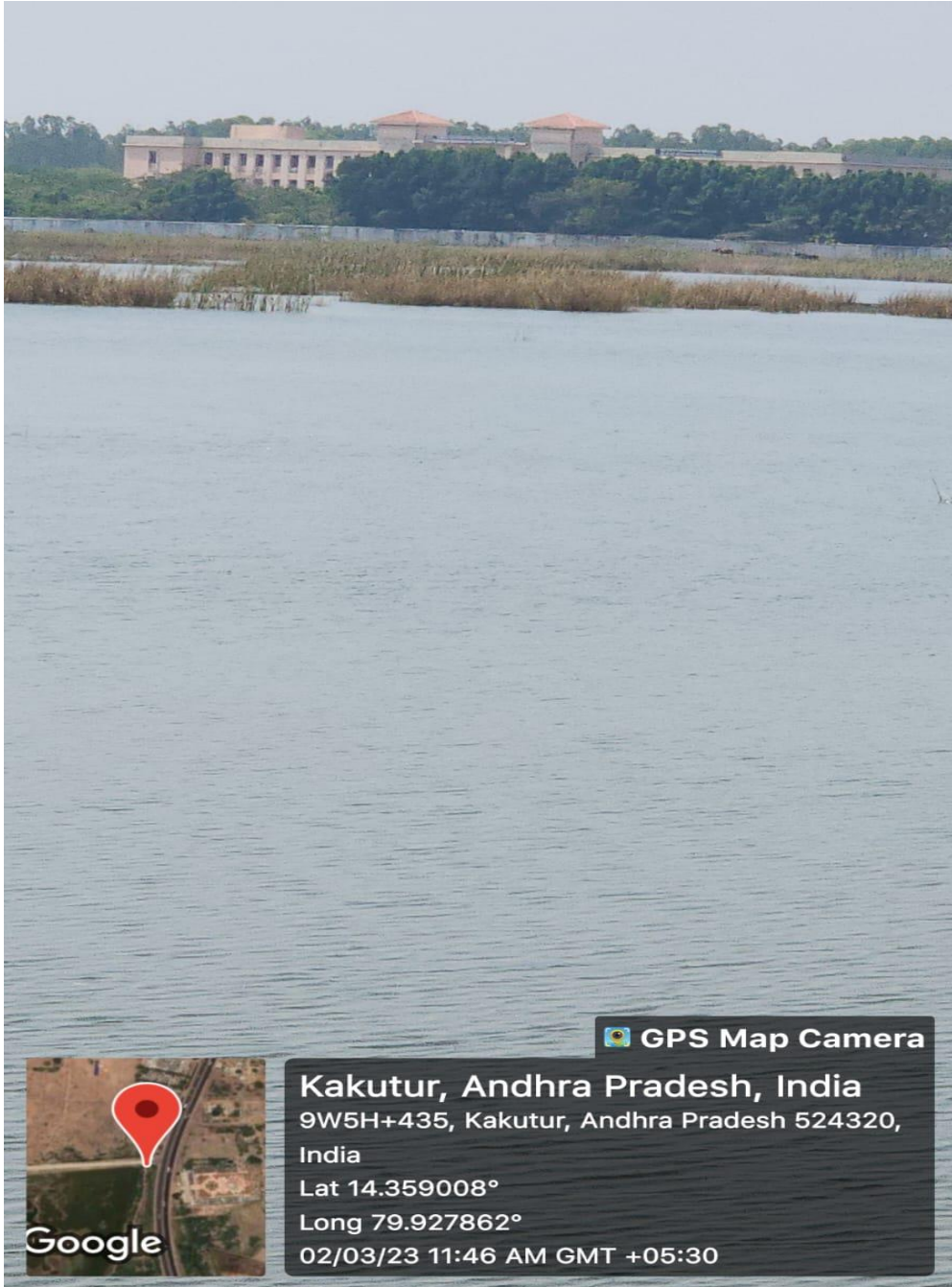


7.1.4 Water conservation Facilities available in the Institution

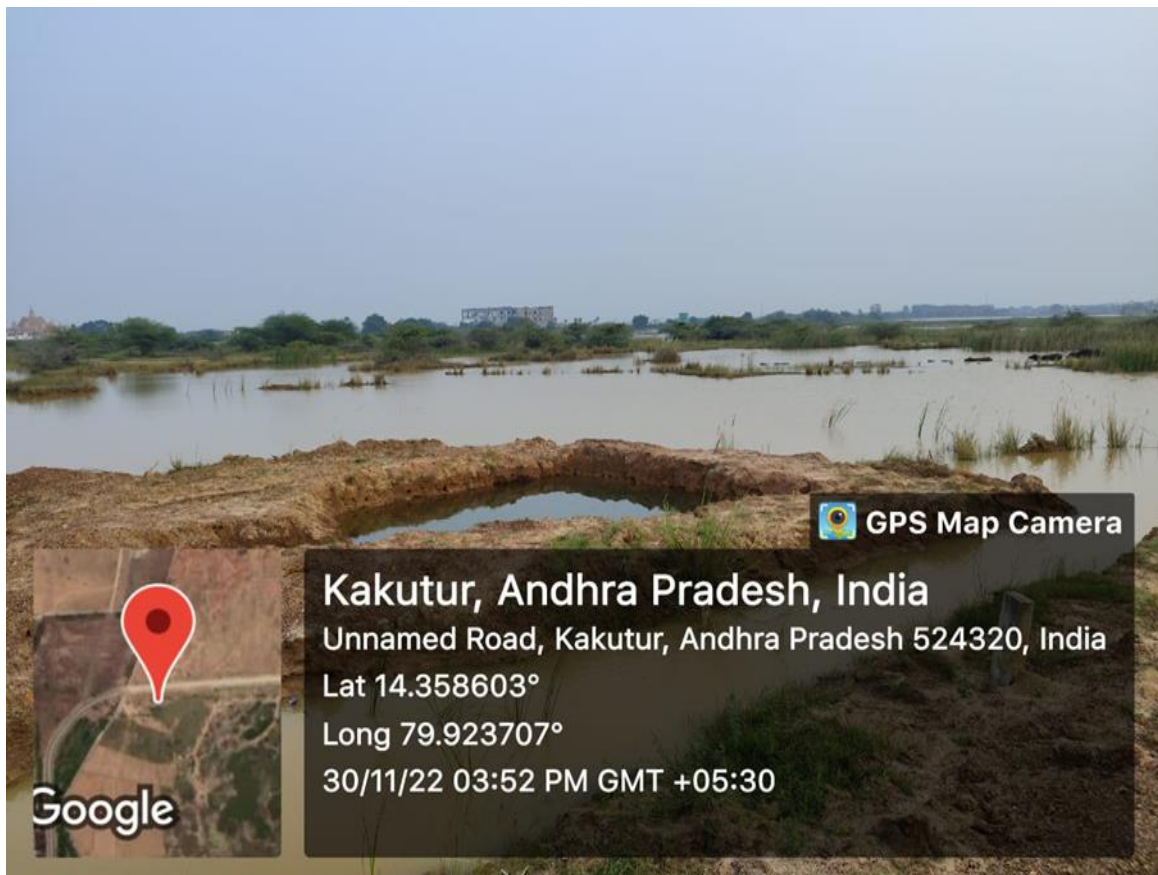
1. Rain Water Harvesting



The rain water was channelized in to form ponds in the campus and excess water released to the tank situated in front of the VSU campus



Rain Water storage in the tank & Ponds



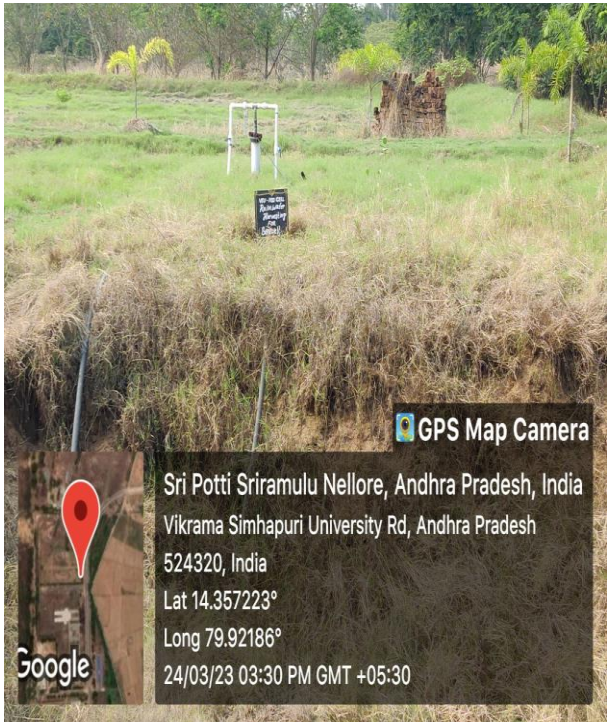
Water Conservation trough Farm ponds

Farm pond-1- Located inside the Herbal garden



Farm pond-2- Located adjacent to Play ground





Natural Water resource a Big Well near Canteen at VSU Campus

Design and Construction of Farm Ponds

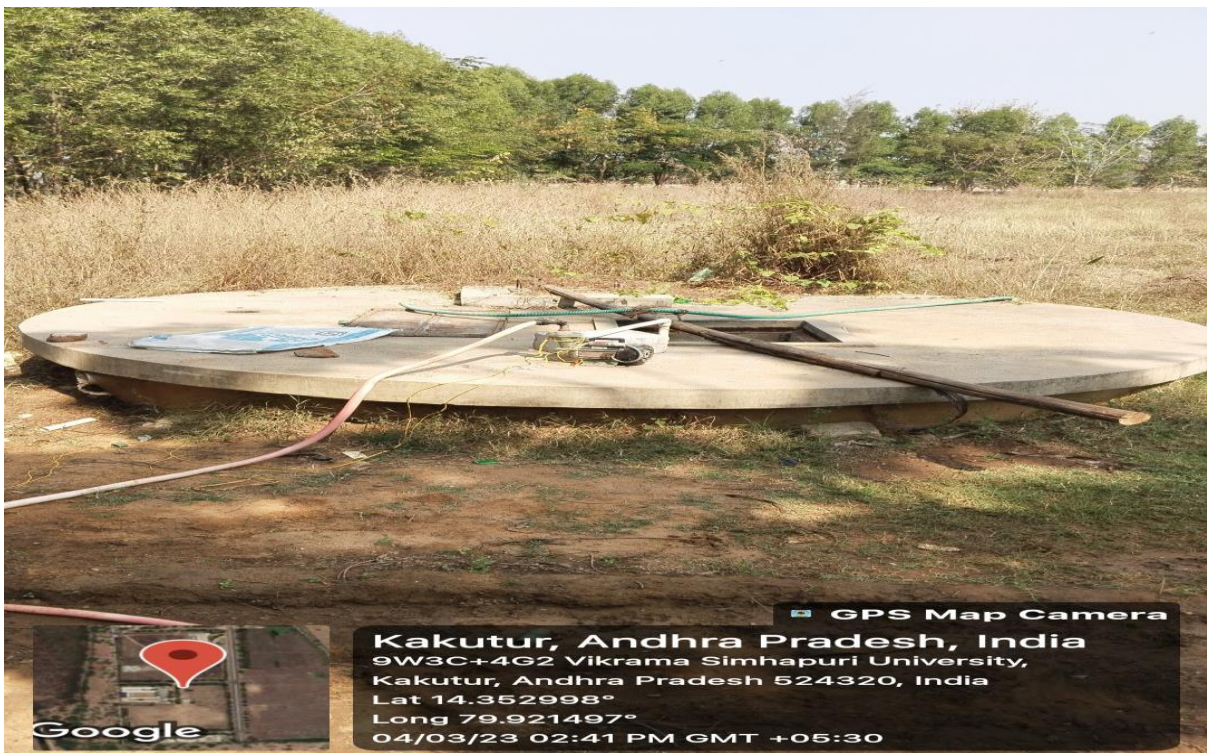


 **Farm Pond**

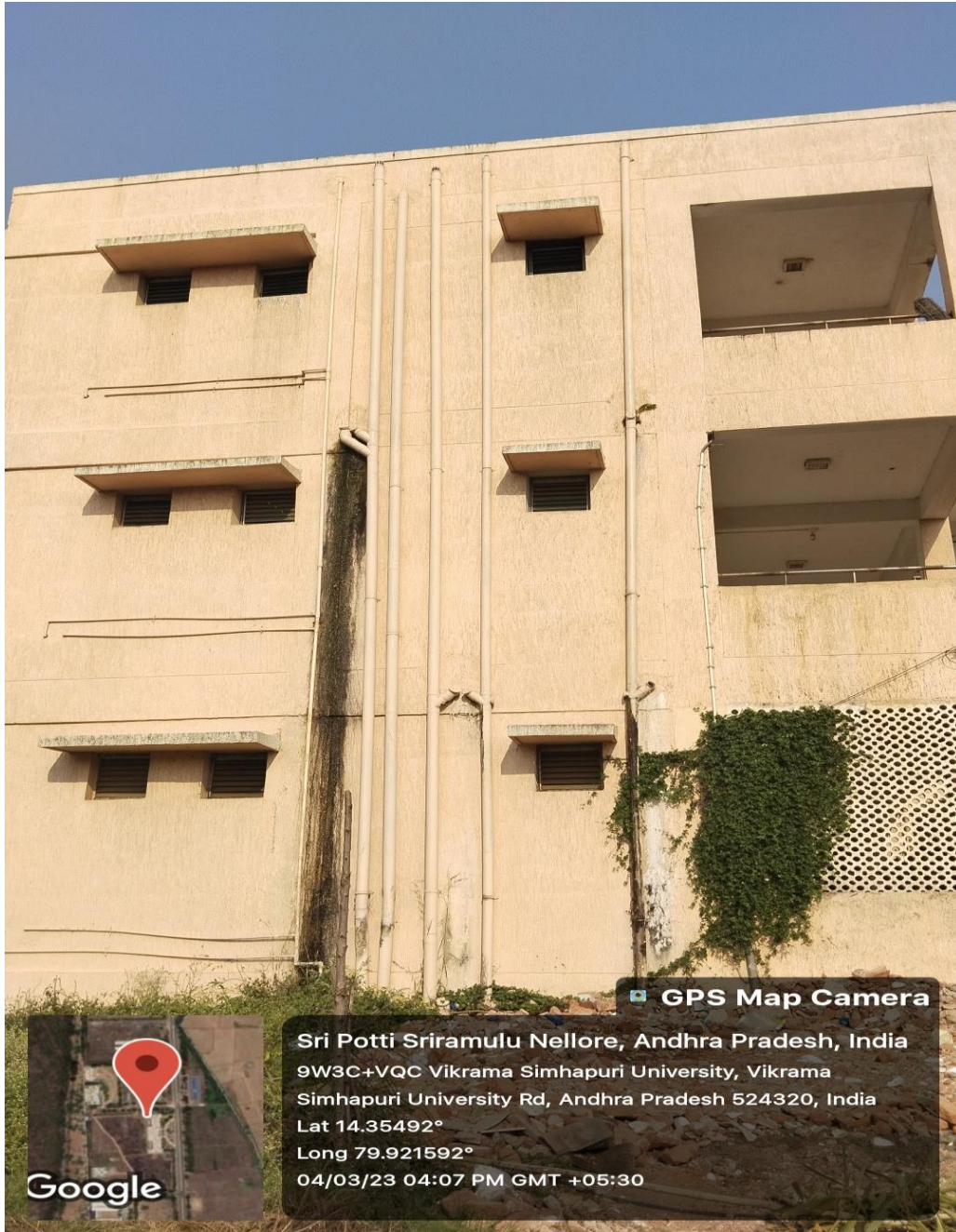
Waste water channelized into a canal for irrigating plants of Artificial forest (Akhira Miavaki method) Developed in the Campus



Rain water collecting tanks



Rain water collecting tanks and used for gardening and construction purposes



Rain water collecting pipes at AD Building

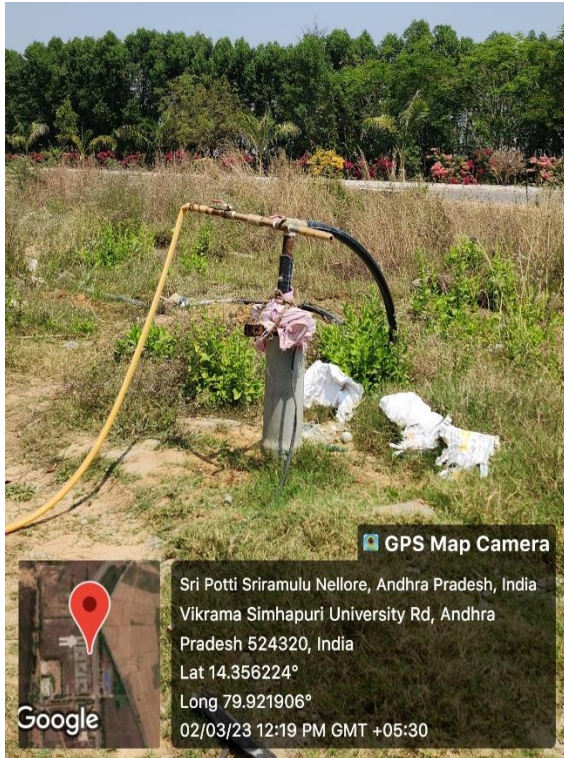
2. Bore well/Open well Recharge



Two Open Wells at VSU Campus Natural Source of Water



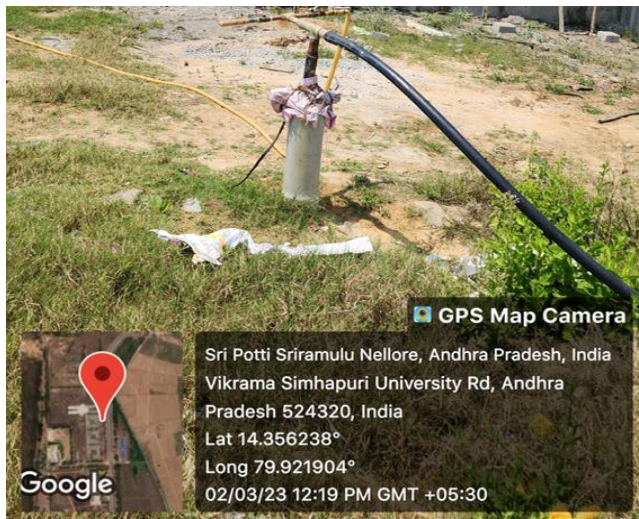
**Bore wells situated at VSU campus, the rain water channelled to form ponds which helps
Recharge of bore wells**



Bore well -1



Bore well -2



Bore well -3

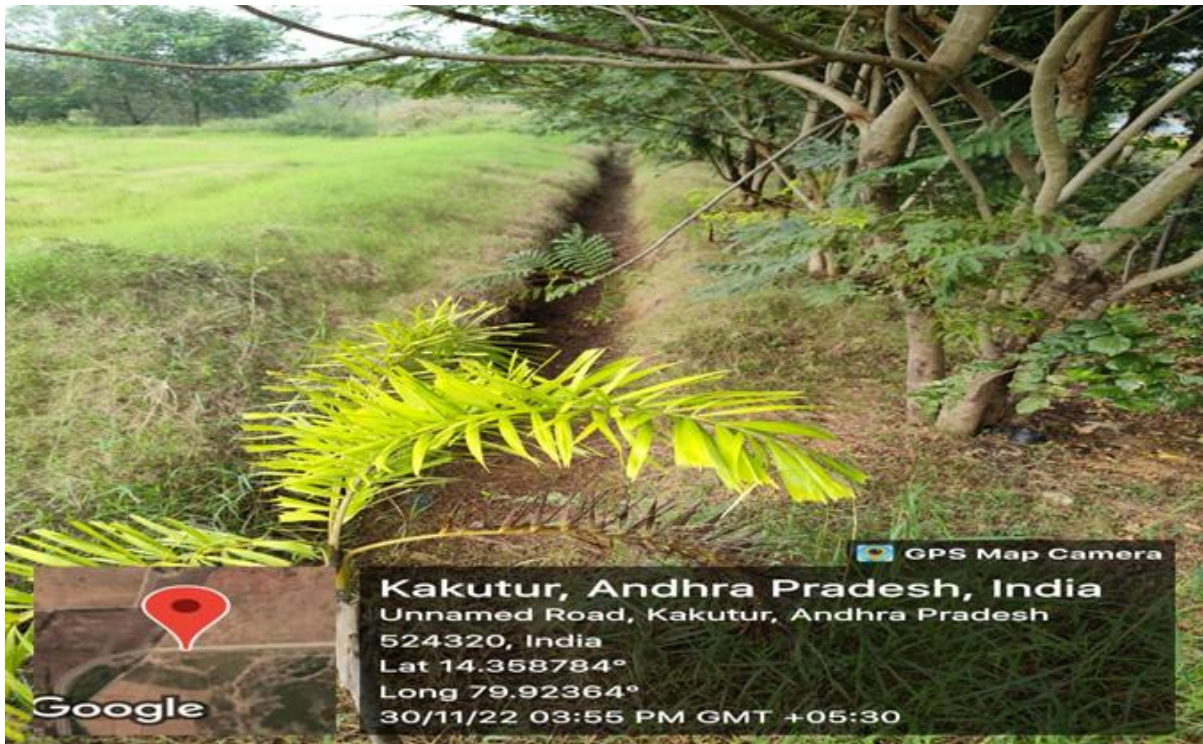


Bore well -4



Bore wells situated at VSU campus, the rain water channelled to form ponds which helps Recharge of bore wells





Trench near herbal Garden to retain rain water





Roof top Rain water harvesting Pit

Roof top Rain water collecting pipes at AD building



Rain water collected on the building roof are utilized for watering plants



Drip irrigation facility in garden for judicious use of water



Drip Irrigation Facility in the Garden for water conservation

